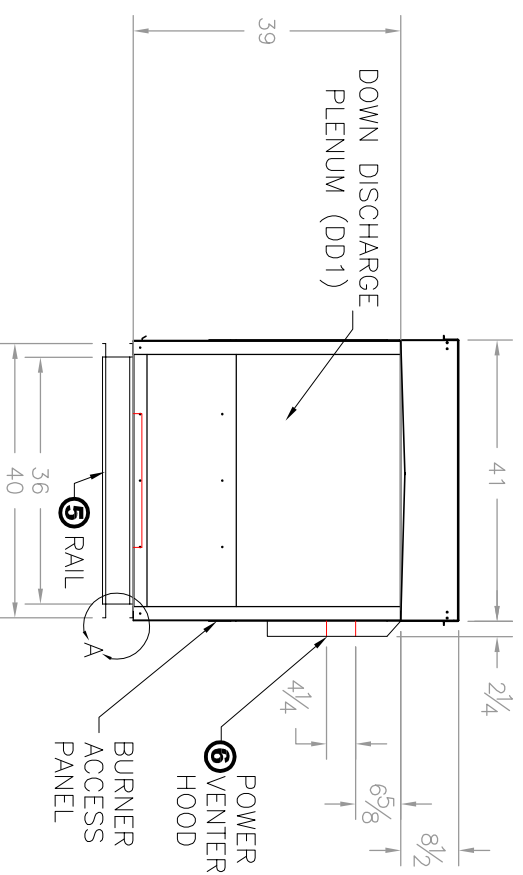
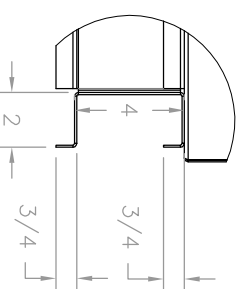


**DETAIL A**



**FRONT VIEW**

- NOTE: MOTOR NOT INCLUDED IN UNIT WEIGHT
- SITE PREPARATION & UNIT LOCATION
- SERVICE CLEARANCES SHALL BE THE SAME WIDTH AS THE UNIT ITSELF.
  - AVOID OVERHEAD POWER LINES, OR OTHER UTILITY ACCESS TO PREVENT CONTACT OR DAMAGE
  - DO NOT LOCATE ANY GAS FIRED EQUIPMENT NEAR CORROSIVE OR EXPLOSIVE VAPORS SUCH AS ACID OR CHLORINATED VAPORS. REFER TO LOCAL CODES AND RESTRICTIONS.

**NOTES:**

1. BASE UNIT CONSTRUCTED OF 20 GA. G90, GALVANIZED FINISH. (OPTIONAL COMPLETE STAINLESS STEEL CABINET AVAILABLE).
2. FURNACES ARE CSA CERTIFIED. (5YR HEAT EXCHANGER WARRANTY)
3. OPTIONAL R/A OPENING SHOWN. RETURN AIR OPENING IS 32"x34", IT INCLUDES (4) 16"x16"x1" T/A FILTERS AS STANDARD.
4. HOISTING POINTS ARE PART OF THE UNIT MOUNTING RAIL, THESE ARE NOT INTENDED FOR PERMANENT SUSPENSION, CONTACT FACTORY. FULL PERIMETER RAIL, 14 GA. G90, GALVANIZED FINISH.
5. INDOOR OR OUTDOOR KIT NOT SHOWN, SEE FURNACE OPTIONS FOR DETAIL, POWER VENTER RAIN SHIELD OR SQUARE-TO-ROUND ADAPTER SHIPPED LOOSE FOR FIELD INSTALLATION.
6. CEV-6000 INCLUDES 12" EVAPORATIVE MEDIA AND STANDARD 304 STAINLESS STEEL CONSTRUCTION.
7. CEV-6000 STANDARD W/ 18"x20"x2" INLET FILTERS (30% EFF.)
8. CEV-6000 INCLUDES ALUMINUM INLET LOUVER/BIRDSCREEN.
9. CEV PLUMBING CONNECTIONS ARE 3/4 FPT FOR DRAIN & OVERFLOW, 3/8 MPT FOR WATER SUPPLY

NOTE: ARS RESERVES THE RIGHT TO CHANGE SPECIFICATIONS AND PRODUCT DESIGN WITHOUT NOTICE. SUCH REVISIONS DO NOT ENTITLE THE BUYER TO CORRESPONDING CHANGES, IMPROVEMENTS, ADDITIONS OR REPLACEMENTS FOR PREVIOUSLY PURCHASED EQUIPMENT.

PROJECT:	LOCATION:	SUBMITTAL NO.	AF1AXD1		
ENGINEER:	CONTRACTOR:	SCALE: 1:28	NAME:	DATE:	
		DRAWN BY:	DW	9/3/2015	
UNIT TYPE:		NET/PT. WT. (LBS)	875	1000	
SC1 W/ 175,200,225 MBH INDIRECT FIRED GAS FURNACE		AIR REPLACEMENT ENGINEERED SYSTEMS			
CEV6000 DIRECT EVAPORATIVE MODULE WITH (DD1)		A DIVISION OF ESSICK AIR PRODUCTS			
		3328 INTERURBAN RD. DENISON TX 75020			
		PHONE: (903) 463-1408, (800) 288-0892, (903) 463-1235			
		WEBSITE: <a href="http://www.aresmkequip.com">www.aresmkequip.com</a>			