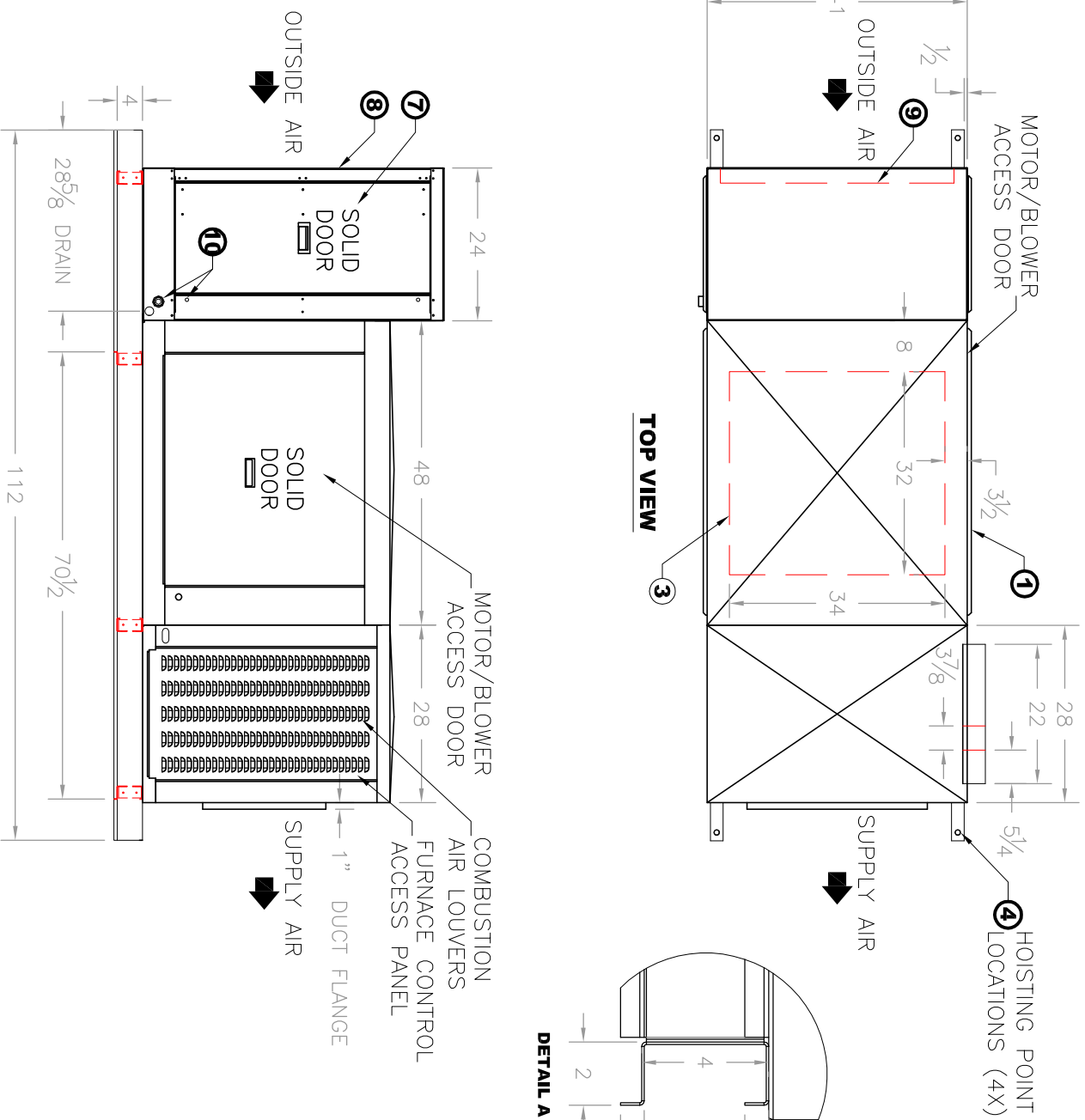
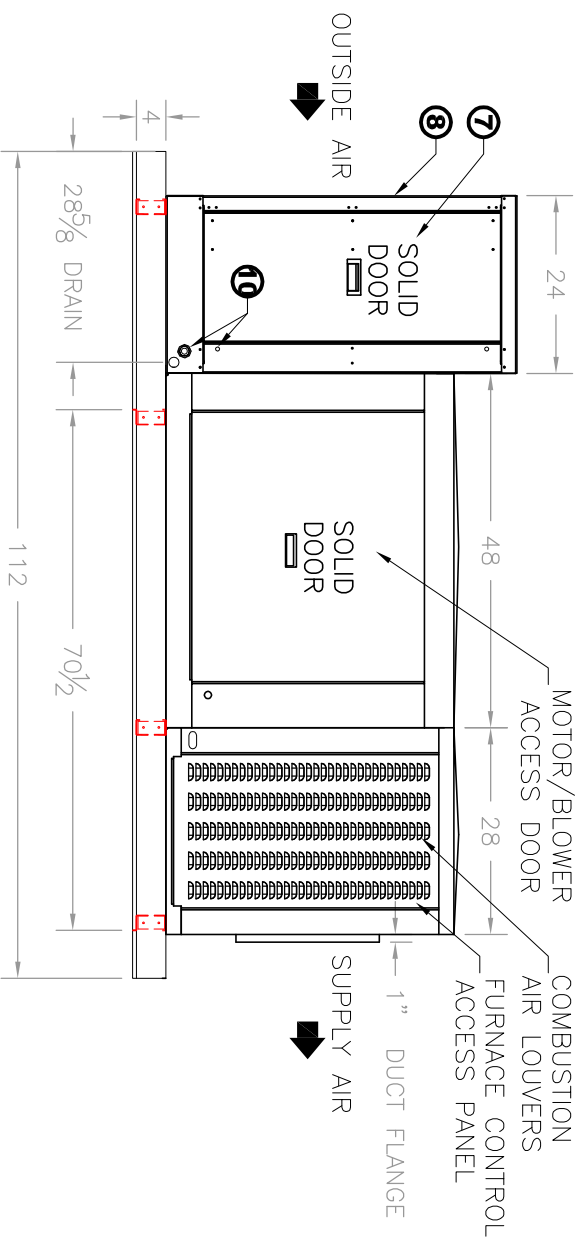


TOP VIEW

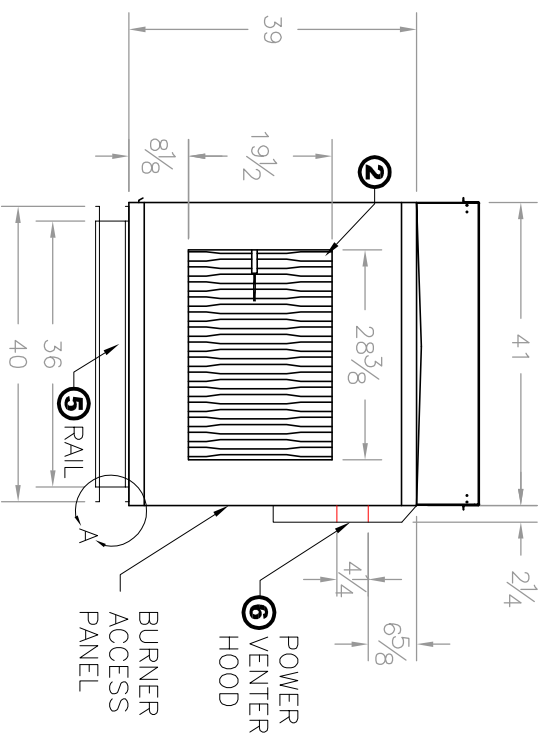


DETAIL A

SIDE VIEW



FRONT VIEW



- NOTE: MOTOR NOT INCLUDED IN UNIT WEIGHT
SITE PREPARATION & UNIT LOCATION
- SERVICE CLEARANCES SHALL BE THE SAME WIDTH AS THE UNIT ITSELF.
 - AVOID OVERHEAD POWER LINES, OR OTHER UTILITY ACCESS TO PREVENT CONTACT OR DAMAGE
 - DO NOT LOCATE ANY GAS FIRED EQUIPMENT NEAR CORROSIVE OR EXPLOSIVE VAPORS SUCH AS ACID OR CHLORINATED VAPORS. REFER TO LOCAL CODES AND RESTRICTIONS.

NOTES:

1. BASE UNIT CONSTRUCTED OF 20 GA. G90, GALVANIZED FINISH. (OPTIONAL COMPLETE STAINLESS STEEL CABINET AVAILABLE).
2. FURNACES ARE CSA CERTIFIED. (5YR HEAT EXCHANGER WARRANTY)
3. OPTIONAL R/A OPENING SHOWN. RETURN AIR OPENING IS 32"X34". IT INCLUDES (4) 16"X16"X1" T/A FILTERS AS STANDARD.
4. HOISTING POINTS ARE PART OF THE UNIT MOUNTING RAIL, THESE ARE NOT INTENDED FOR PERMANENT SUSPENSION, CONTACT FACTORY.
5. FULL PERIMETER RAIL, 14 GA. G90, GALVANIZED FINISH.
6. INDOOR OR OUTDOOR KIT NOT SHOWN, SEE FURNACE OPTIONS FOR DETAIL, POWER VENTER RAIN SHIELD OR SQUARE-TO-ROUND ADAPTER SHIPPED LOOSE FOR FIELD INSTALLATION.
7. CEV-6000 INCLUDES 12" EVAPORATIVE MEDIA AND STANDARD 304 STAINLESS STEEL CONSTRUCTION.
8. CEV-6000 STANDARD W/ 18"X20"X2" INLET FILTERS (30% EFF.)
9. CEV-6000 INCLUDES ALUMINUM INLET LOUVER/BIRDSCREEN.
10. CEV PLUMBING CONNECTIONS ARE 3/4 FPT FOR DRAIN & OVERFLOW, 3/8 MPT FOR WATER SUPPLY.

PROJECT: -		LOCATION: -		SUBMITTAL NO. AF1AXX1	
ENGINEER: -		CONTRACTOR: -		SCALE: 1:26	
UNIT TYPE: SC1 W/ 175,200,225 MBH INDIRECT FIRED GAS PACKAGED FURNACE CEV6000 DIRECT EVAPORATIVE MODULE		DRAWN BY: DW		NAME: DW	
		NET/DP VT (LBS)		DATE: 9/3/2015	
		800		910	
<p>ARES AIR REPLACEMENT ENGINEERED SYSTEMS</p> <p>A DIVISION OF ESSICK AIR PRODUCTS 3328 INTERURBAN RD. DENISON, TX 75020 PHONE: (903) 463-1408, (800) 288-0892, (903) 463-1235 WEBSITE: www.aresengineer.com</p>			<p>NOTE: ARES RESERVES THE RIGHT TO CHANGE SPECIFICATIONS AND PRODUCT DESIGN WITHOUT NOTICE. SUCH REVISIONS DO NOT ENTITLE THE BUYER TO CORRESPONDING CHANGES, IMPROVEMENTS, ADDITIONS OR REPLACEMENTS FOR PREVIOUSLY PURCHASED EQUIPMENT.</p>		