

ALL UNITS ARE IN INCHES

**DUCT CONNECTION
DIMENSIONAL DATA**

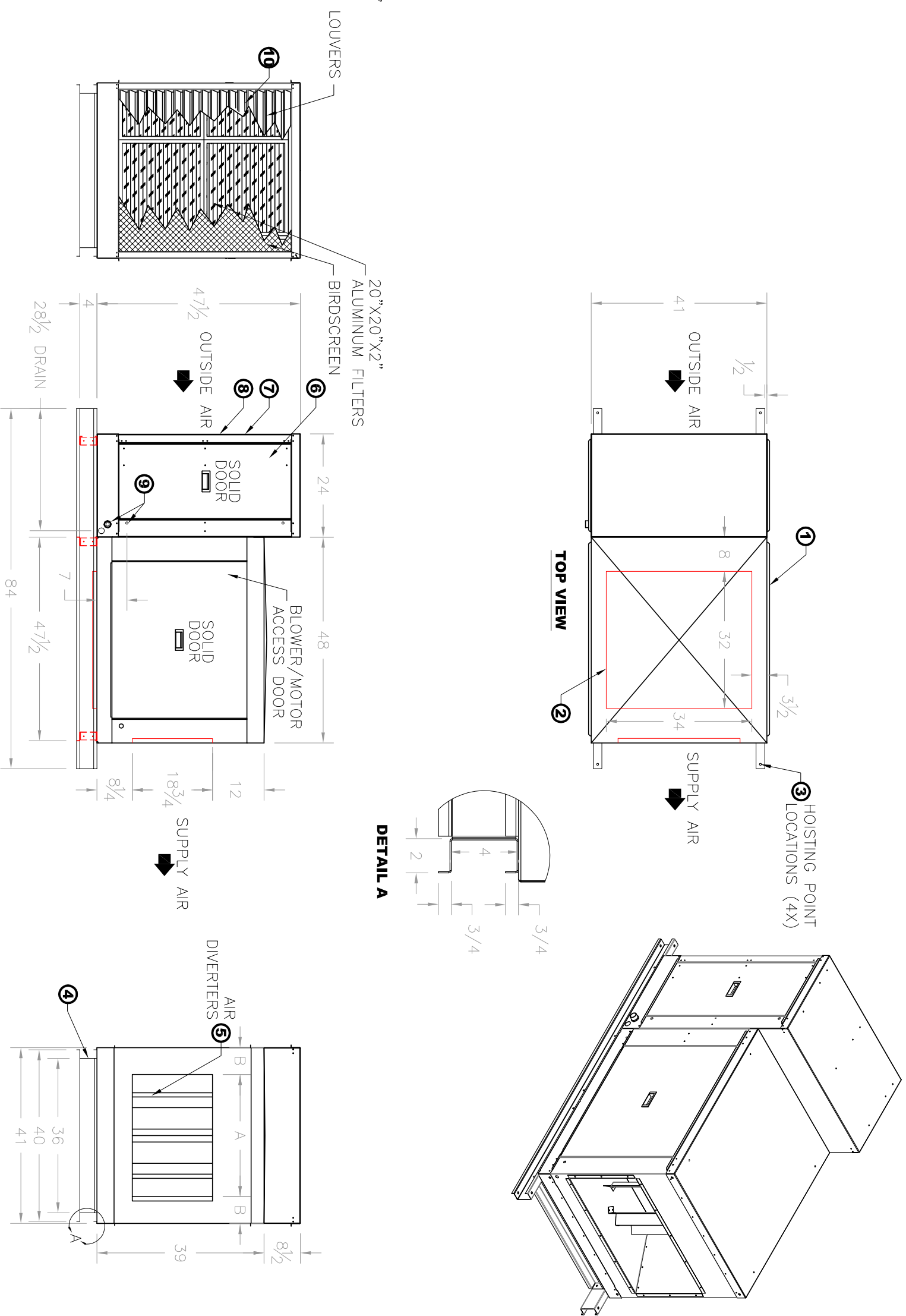
UNITS	A	B	MAX R/A CFM
SC-1	28 1/2"	6 1/4"	5000
SC-2	37 1/4"	1 7/8"	5000

NOTE: MOTOR NOT INCLUDED IN UNIT WEIGHT
SITE PREPARATION & UNIT LOCATION

- SERVICE CLEARANCES SHALL BE THE SAME WIDTH AS THE UNIT ITSELF.
- AVOID OVERHEAD POWER LINES, OR OTHER UTILITY ACCESS TO PREVENT CONTACT OR DAMAGE
- DO NOT LOCATE ANY GAS FIRED EQUIPMENT NEAR CORROSIVE OR EXPLOSIVE VAPORS SUCH AS ACID OR CHLORINATED VAPORS. REFER TO LOCAL CODES AND RESTRICTIONS.

NOTES:

1. BASE UNIT CONSTRUCTED OF 20 GA. G90, GALVANIZED FINISH, (OPTIONAL) 304 STAINLESS STEEL CABINET AVAILABLE.
2. OPTIONAL R/A OPENING SHOWN. RETURN AIR T/A FILTERS AS STANDARD.
3. HOISTING POINTS ARE PART OF THE UNIT MOUNTING RAIL, THESE ARE NOT INTENDED FOR PERMANENT SUSPENSION,
4. FULL PERIMETER RAIL, 14 GA. G90, GALVANIZED FINISH.
5. AIR DIVERTERS USED ON SC2 & SE2 BLOWERS ONLY.
6. CEV-6000 INCLUDES 12" EVAPORATIVE MEDIA AND STANDARD 304 STAINLESS STEEL CONSTRUCTION.
7. CEV-6000 STANDARD W/ 20"X20"X2" INLET FILTERS (30% EFF.)
8. CEV-6000 INCLUDES ALUMINUM INLET LOUVER/BIRDSCREEN.
9. CEV PLUMBING CONNECTIONS ARE 3/4 FPT FOR DRAIN & OVERFLOW, 3/8 MPT FOR WATER SUPPLY.
10. UNIT PROVIDED WITH ALUMINUM INTAKE LOUVER WHICH INCLUDES EXPANDED METAL BIRDSCREEN AND (6) 20"X20"X2" PRE-FILTERS ON INLET AIR STANDARD.



BACK VIEW

SIDE VIEW

FRONT VIEW

PROJECT: -	LOCATION: -	SUBMITTAL NO: AF4XXXX1	AIR REPLACEMENT ENGINEERED SYSTEMS		
ENGINEER: -	CONTRACTOR: -	SCALE: 1:26	NAME: DW	DATE: 9/3/2015	A DIVISION OF ESSICK AIR PRODUCTS 3328 INTERIRBAN RD. DENVER, TX 75020 PHONE: (903) 463-1408, (800) 288-0892, (903) 463-1235 WEBSITE: www.aresnoisequip.com
UNIT TYPE: SC-1, SC-2, BLOWER SECTION WITH CEV 6000 EVAP SECTION		DRAWN BY: -	DW	610	
		NET/DP WT (LBS): 500			

NOTE: ARES RESERVES THE RIGHT TO CHANGE SPECIFICATIONS AND PRODUCT DESIGN WITHOUT NOTICE. SUCH REVISIONS DO NOT ENTITLE THE BUYER TO CORRESPONDING CHANGES, IMPROVEMENTS, ADDITIONS OR REPLACEMENTS FOR PREVIOUSLY PURCHASED EQUIPMENT.